



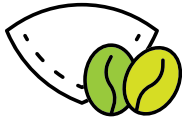
# ORGANIC COMPOST

## ABONO ORGÁNICO

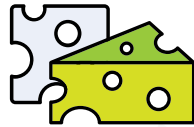


### ACCEPTED MATERIALS

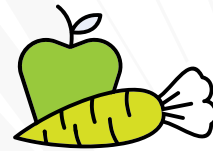
#### MATERIALES ACEPTADOS



**Coffee Grounds /**  
Los Posos de Café



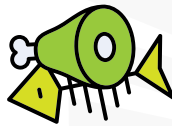
**Dairy /**  
Los Productos Lácteos



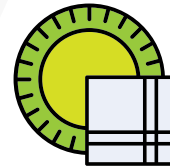
**Fruits + Vegetables /**  
Frutas y Verduras



**Grains /**  
Granos

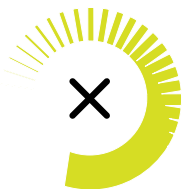


**Meat + Bones /**  
Carne y Huesos



**Paper Plates  
+ Napkins /**  
Platos y Servilletas  
de Papel

**\*Please use clear plastic bags when sorting + recycling your materials. /**  
\*Utilice bolsas de plástico transparentes cuando recicla sus materiales.



### REJECTED MATERIALS

#### MATERIALES RECHAZADOS

**Biodegradable Plastics, Charcoal Ash, Cooking Oil, Plants & Lawn Brush, Rubber Bands, Wood Scraps**

Biodegradables de Plástico, Ceniza de Carbón, Aceite de Cocina, Plantas y Cepillo de Césped, Bandas Elásticas, Restos de Madera